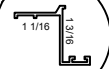


16 Gauge Steel  
Internal  
Corner Gusset  
All Four Corners

Overall Width

Overall Height

41" Standard Handle Height



Aluminum  
Z Bar  
Sub Frame

Felt  
Weatherstrip

Stainless Steel Hinge

12x12 Mesh Screen  
Stainless Steel Wire Cloth  
304 Stainless Steel

#8 x 3/4  
Mounting Screw

22 Gauge  
Galvannealed  
T-Bar

Kick Panel  
18 Gauge  
Galvannealed Steel  
Embossed For Rigidity

22 Gauge  
Galvannealed  
T-Bar

Kick Panel  
18 Gauge  
Galvannealed Steel  
Embossed For Rigidity

Tig Welded Corners

22 Gauge  
Roll Formed  
Tubular Galvanneal  
Steel Frame

Insert  
Clip

Glass  
Insert

Insert  
Clip

Aluminum  
Box Sweep

INFILL OPTIONS:

Fiberglass

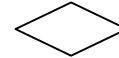
Stainless Steel Wire Cloth

.023 (Standard)

.028

KICK PANEL EMBOSSED OPTIONS:

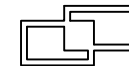
Single Diamond



Double Diamond (Standard)



Evolution (Upcharge)



Hinge Options:

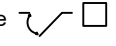
4 Hinge (Standard)

5 Hinge (Optional)

6 Hinge (Optional)

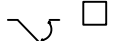
Right Hinge

Outside Looking In



Left Hinge

Outside Looking In



**Tough Tek Metals**

Phone# 563-538-4224

Model# 505 Storm Door

Drawn By:

Date:

JM

Sept. 13, 2021